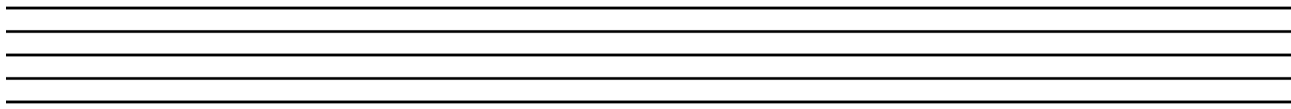


NOTATION

NAME _____

THE STAVE.

THIS IS A STAVE. A STAVE IS FIVE LINES AND FOUR SPACES. THIS IS WHAT WE WRITE MUSIC ON SO THAT WE KNOW WHAT NOTES WE HAVE TO PLAY.



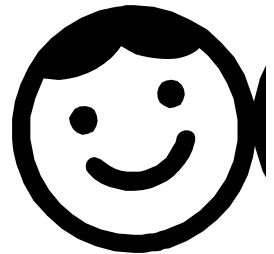
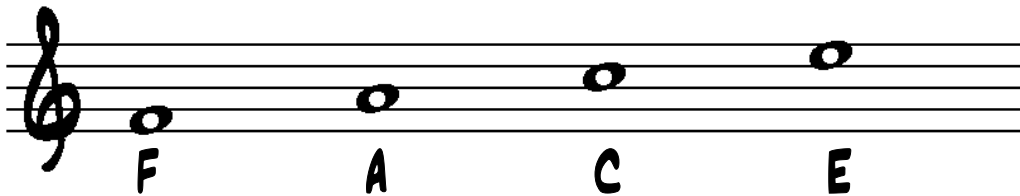
THE TREBLE CLEF.

THE TREBLE CLEF IS LIKE A KEY. IT TELLS US HOW HIGH OR LOW THE NOTES ARE SUPPOSED TO BE PLAYED.



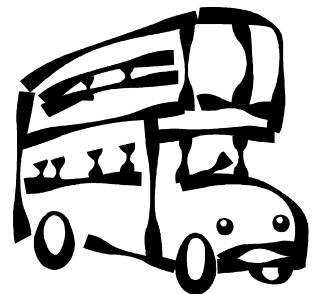
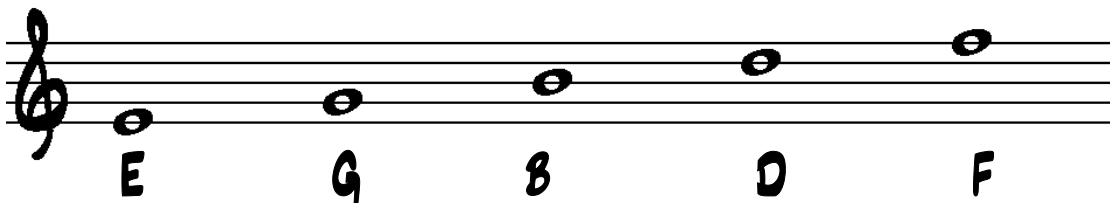
THE NOTES IN THE SPACES.

IT IS EASY TO REMEMBER THE NOTES IN THE SPACES AS THEY SPELL OUT THE WORD FACE.

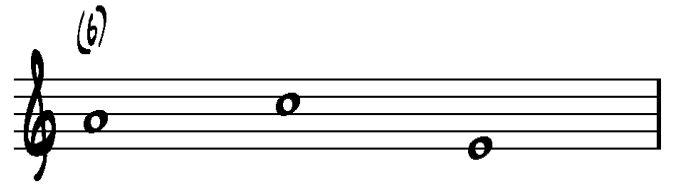
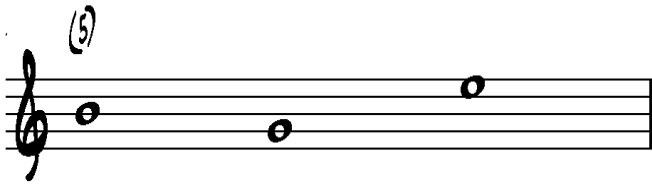
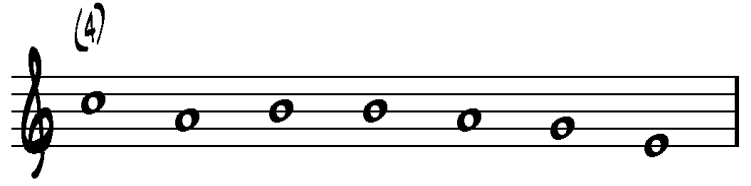
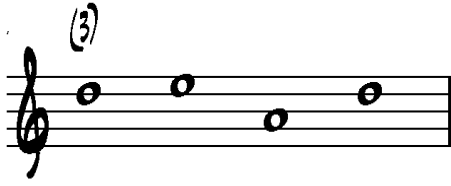
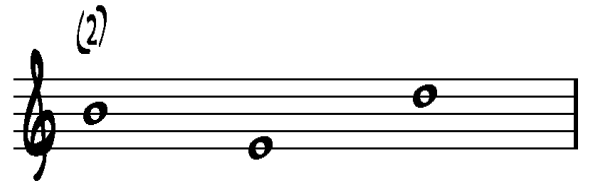
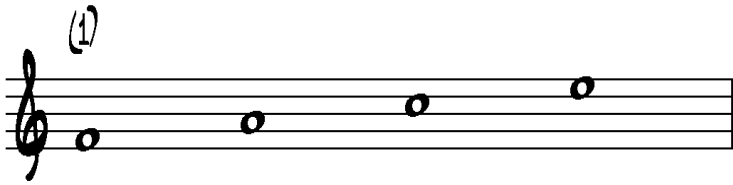


THE NOTES ON THE LINES.

THERE ARE DIFFERENT RHYMES TO HELP YOU TO REMEMBER THE NOTES ON THE LINES. ONE EXAMPLE IS; EVERY GREEN BUS DRIVES FAST
CAN YOU THINK OF ANOTHER EXAMPLE?



LABEL THE NOTES. EACH ONE SPELLS OUT A WORD.



CAN YOU THINK OF ANY OTHER WORDS THAT YOU CAN SPELL USING THE LETTERS A,B,C,D,E,F,G?

